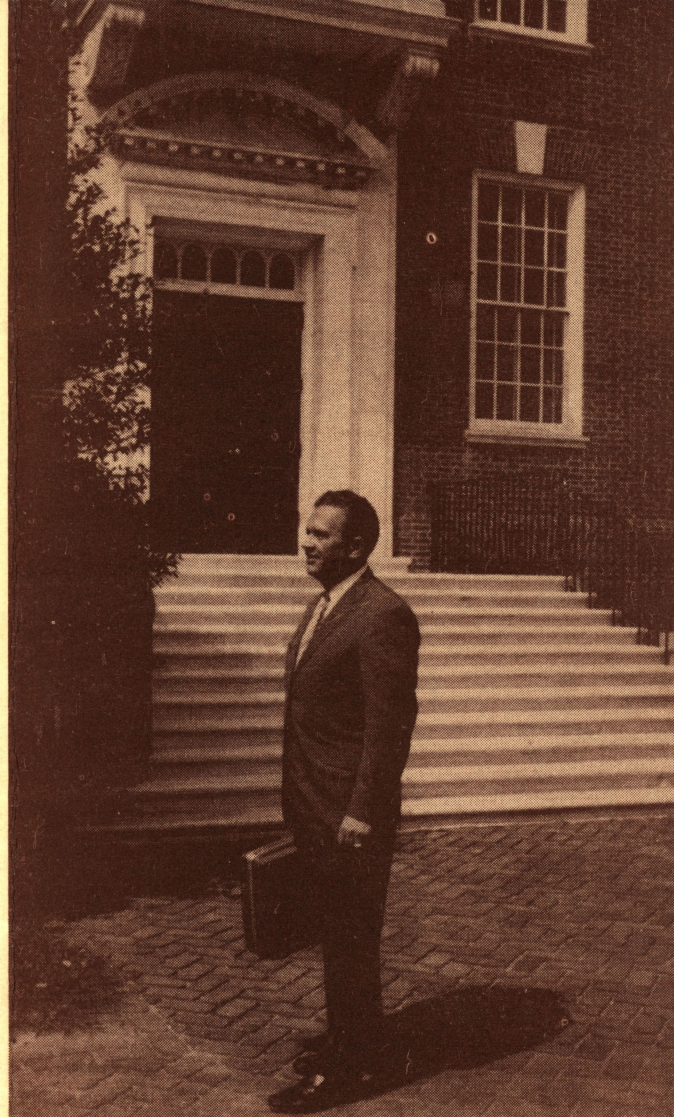


HALE for SENATE COMMITTEE
Regional Republican Headquarters
Newark Shopping Center
Newark, Delaware 19711



Re-elect

Ev

HALE

Republican Candidate For
STATE SENATOR
12th District



STATE OF DELAWARE
SENATE
DOVER

EVERETTE HALE
109 MERIDEN DRIVE
FAIRFIELD
NEWARK, DELAWARE 19711
Home: 368-5718
Office: 774-9188

Dear Friends--

The General Assembly has made solid progress in every area that State Government serves people. I can honestly say that in my eight years of legislative service that never before has there been any two years comparable in terms of accomplishment. Much credit is due to Governor Peterson's leadership--he gets things done--but the General Assembly has dealt constructively with problems that have been with us since the turn of the century (e.g., need for Constitutional Revision) as well as our most recent and very serious problem of drug use among our youth.

The inside lists by category some items which have been of concern to our Newark area. I supported all of these action measures by my vote and worked on the drafting, sponsorship, and passage of many of them.

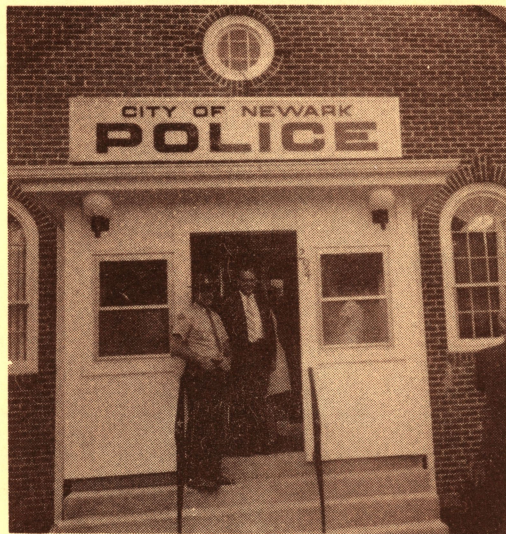
My interest now is for the future, the next two years: How to solve problems that are facing our families in terms of adequate transportation facilities, ecology of our local areas, enforcement of state standards for air pollution, economy in initiating new programs as well as a sensible appraisal of our existing programs, and most importantly--the continuation of our present efforts to deal harshly with drug pushers and the promotion of more effective rehabilitation among our youthful users and experimenters.

I would hope that I could stimulate you to think about how Delaware might better meet its responsibilities as you see them, and then go one step further and share your thinking with me. I will be looking for your reactions as I campaign and would urge you to give me a call--368-5713

Sincerely yours,

Everette Hale
Everette Hale





Crime Reduction

Ev joined with his colleagues to make real progress in coping with increasing crime rates, need for judicial reform and meaningful rehabilitation. He supported increases in manpower and salaries for police; stiffening of law requiring life terms for habituals, increasing penalties for distributing obscene materials to youth; eliminating the debtor's prison. He further helped enact a package to overhaul and reorganize the State Board of Parole with greater emphasis on rehabilitation as well as measures to provide for the State's first detoxification center.



Government Reform

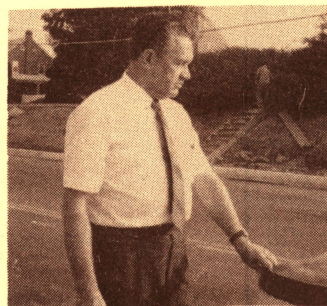
Governor Peterson was successful in his efforts to reorganize the executive branch of government where others have faltered since 1917. Ev played a key role as a member of the Task Force which created the Departments and later as a member of the Joint Legislative Committee which secured passage of this milestone legislation. Reorganization along with implementation of Economy Committee Recommendations will make it possible to efficiently operate the state's \$250 million business.



**KEEP EV'S
EXPERIENCE AND
ABILITY
WORKING FOR YOU
IN DOVER**

Drugs

Drugs in the 70's--a MAJOR problem! Working with law enforcement officers, attorneys, and medical personnel, Delaware enacted drug control legislation defining and classifying dangerous drugs, stiffened the penalties for pushers and provided the Courts with the option of ordering treatment in lieu of prison. Further provided was the authorization and funding of the drug prevention programs in the public schools as well as the drug abuse treatment centers.



Highways

Roads are coming to the Newark area. Count them!

- *Newark beltway
- *301 Connector
- *141 Connector
- *Widening and Improving
- 896
- 273
- Elkton Road
- So. Chapel Street
- *Barksdale Bridge

What is needed? MORE!!!



Environment

Ev belongs to the team that has marked up the first scores in favor of people in their environment. The implementation of air and water pollution standards is in progress with a crackdown on major polluters. He supported measures for emission standards and testing on motor vehicles as well as engineering for solid waste disposal plant. A \$1.3 million improvement program for Lum's Pond and acquisition of 220 acres of parkland for White Clay are part of the ACTION for Newark!



Education

Ev's record and contribution are especially outstanding in Newark's most important field. Because he has continually recognized educational need in Newark in his eight years in Dover, he has secured under his sponsorship major legislation in this session. Among these--teacher pay raises, additional funding (\$2.4 million) for equalization among growing, lesser affluent districts, budgetary provisions for duty free lunch periods, and creation of Action Force for cost-study of school construction. In addition he supported funding for the New Castle County Vocational Technical High School and implementing legislation for vocational and occupational education in all high schools.